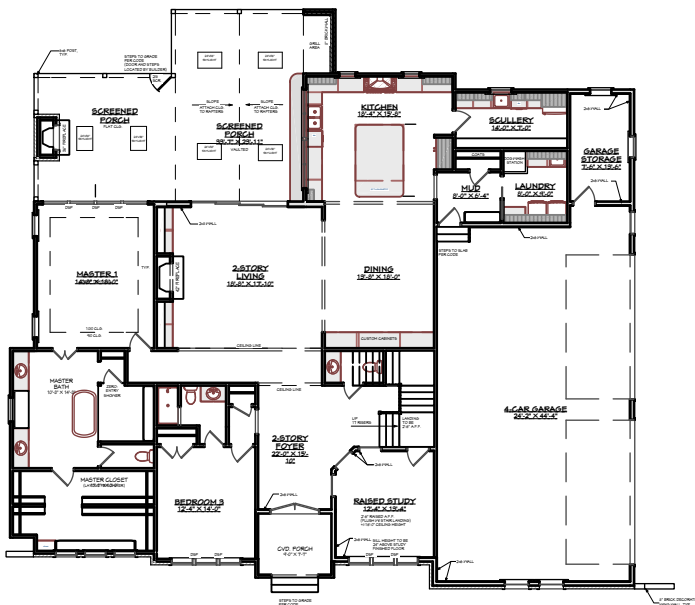


The Woodbridge



FIRST FLOOR



SECOND FLOOR

NOTE: TEMPORARY BROCHURE ONLY! THIS DESIGN MAY NOT REFLECT ACTUAL CHARACTERISTICS OF FINISHED HOME. THE FLOOR PLAN, ELEVATION, AND DIMENSIONS ARE FOR ILLUSTRATIVE PURPOSES ONLY AND MAY VARY



3206 Heritage Trade Dr. Ste. 116 Wake Forest, NC 27587 OFFICE PHONE: (919) 556-6032 EMAIL: tim-hsd@nc.rr.com

SQUARE FOOTAGE	
FIRST FLOOR HEATED	2,823 SQ. FT.
SECOND FLOOR HEATED	2,404 SQ. FT.
TOTAL HEATED	5,227 SQ. FT.
4-CAR GARAGE	1,245 SQ. FT.
FRONT COVERED PORCH	70 SQ. FT.
REAR COVERED PORCH	646 SQ. FT.
UNFINISHED STORAGE (3RD FLOOR)	1,183 SQ. FT.

*Copyright © 2023 by Heritage Home Designs, LLC All rights reserved.

Corp. License Number C-2550