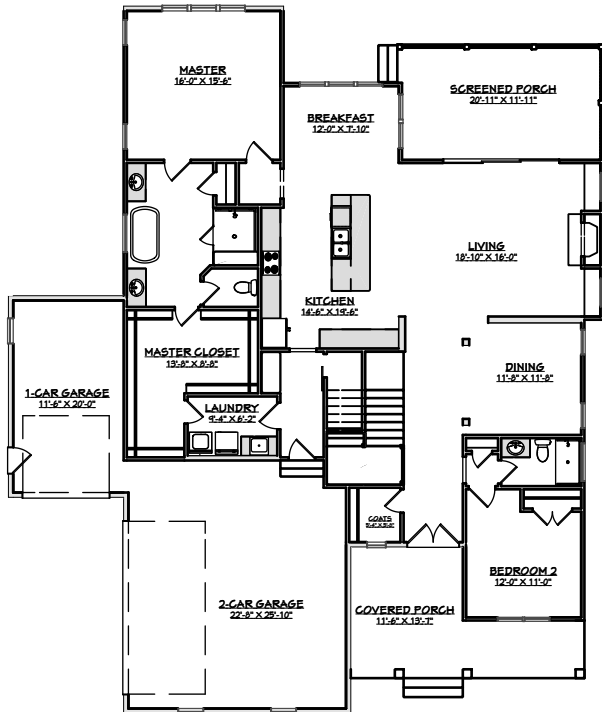
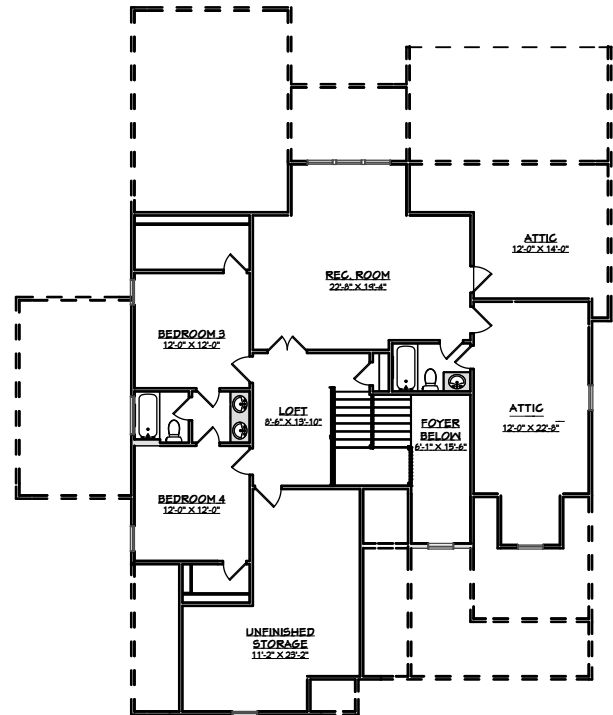


# The Robin

1105 Springdale Drive



FIRST FLOOR PLAN



SECOND FLOOR PLAN

NOTE: TEMPORARY BROCHURE ONLY! THIS DESIGN MAY NOT REFLECT ACTUAL CHARACTERISTICS OF FINISHED HOME. THE FLOOR PLAN, ELEVATION, AND DIMENSIONS ARE FOR ILLUSTRATIVE PURPOSES ONLY AND MAY VARY



3206 Heritage Trade Dr. Ste. 116  
Wake Forest, NC 27587

OFFICE PHONE: (919) 556-6032  
EMAIL: tim-hsd@nc.rr.com

Corp. License Number C-2550

## SQUARE FOOTAGE

FIRST FLOOR HEATED	2,230 SQ. FT.
SECOND FLOOR HEATED	1,152 SQ. FT.
TOTAL HEATED	3,382 SQ. FT.
2-CAR GARAGE	612 SQ. FT.
1-CAR GARAGE	252 SQ. FT.
FRONT COVERED PORCH	236 SQ. FT.
SCREENED PORCH	254 SQ. FT.
UNFINISHED STORAGE	339 SQ. FT.